

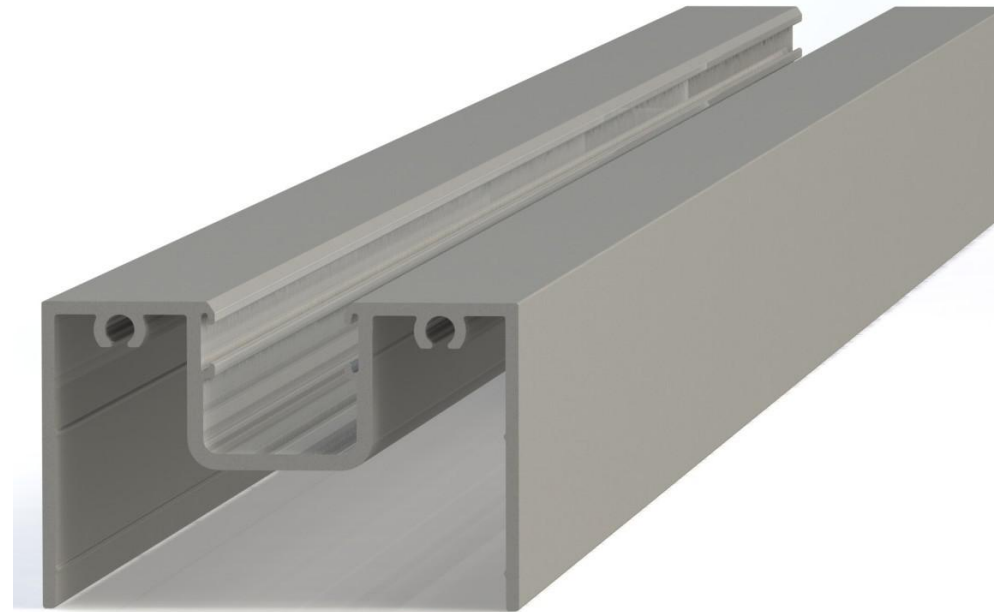
AC11

*Simple, yet Elegant*



# INDEX

KeyFeatures.....	3
Extrusion Types.....	4
Scenarios.....	5-6
Door Assemblies.....	7-8
Technical Information.....	9



# Key Features

*AC11* is an innovative partition system which provides the user with comfort, flexibility and finesse.  
*AC11* holds many features within it's simplified extrusion range.

## Glass

6mm/10mm/15mm Low Iron Laminated. Acheive Exceptional Clarity and Top Acoustic Performance

## Forgiveness

20mm '+' '-' in Travel via Top Slip Track for Installation Efficiency

## Structure

Side by Side Anchoring Points on Top/Bottom for Maximum Rigidity

## Sound

Adaptable, flexible foam tape application on Top/Bottom Track for Minimal Air Gaps, Reduction in Sound

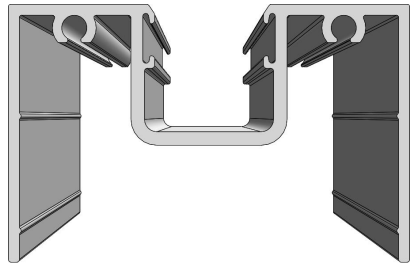
## Doors

Top Hung as Standard, Double Soft Close Action

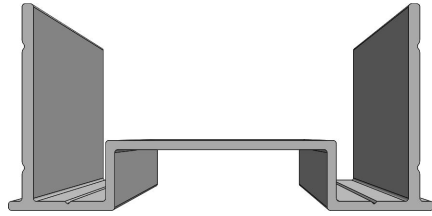
## Unification

Worldwide Distribution/Installation, Certified Warranty

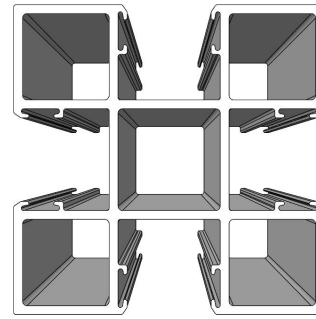
# Extrusion Types



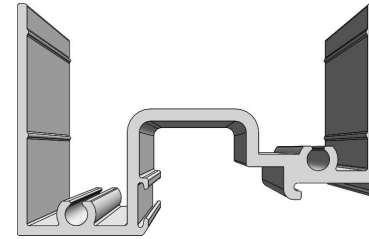
AC11-1



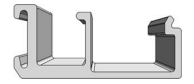
AC11-2



AC11-3



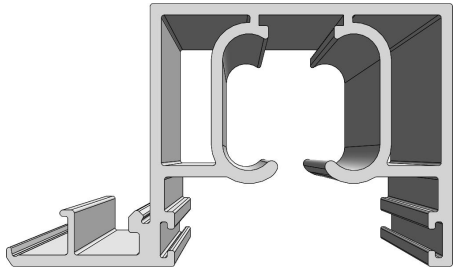
AC11-4



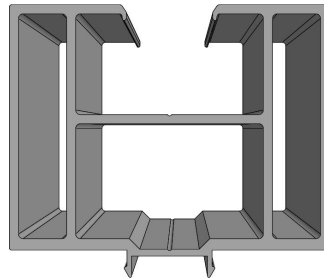
AC11-5



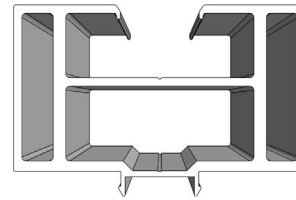
AC11-6



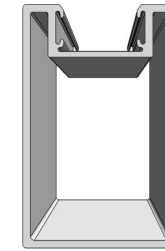
AC11-7



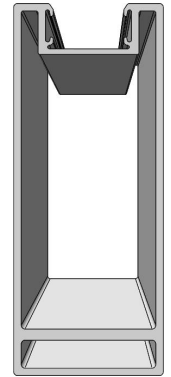
AC11-8A



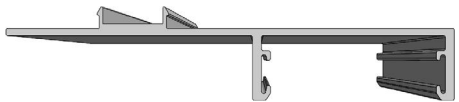
AC11-8B



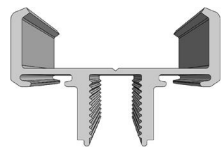
AC11-9A



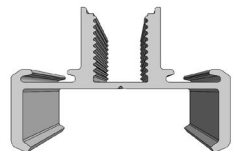
AC11-9B



AC11-10



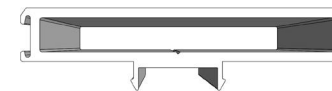
AC11-11A



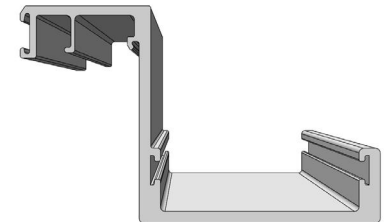
AC11-11B



AC11-11C



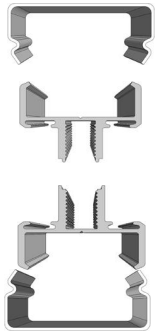
AC11-12



AC11-13

# Scenarios

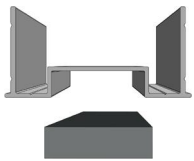
- Two Part Vertical Mullion
- Sized to receive Wiremold Attachment
- Interchangeable Plug/USB Sockets



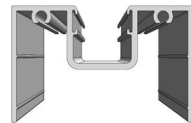
- 10mm Low Iron Laminated Glass
- High STC Rating
- Extraordinary Clarity



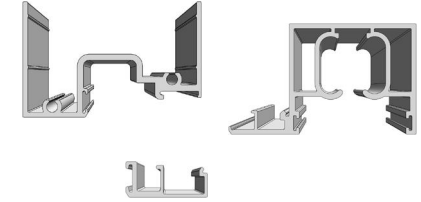
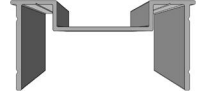
- Double Anchored
- Slip Track Receiver
- Expanding Foam Top/Bottom



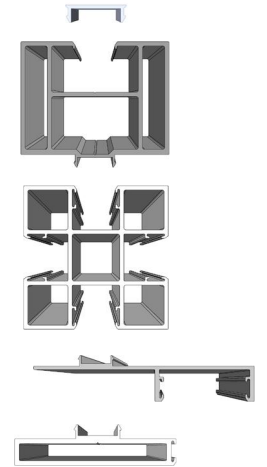
- Fixed Cover
- Adjusts to Floor via SlipTrack



- Sill Mounts Top
- Clip On Door Extension
- 20mm Travel

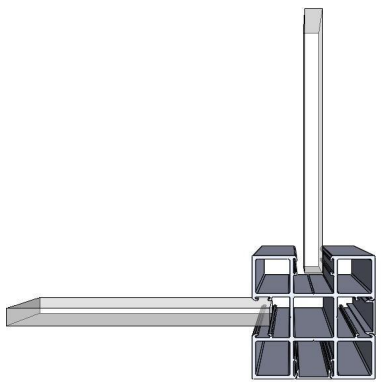


- 1 Piece Post
- Accepts Swing/Slider Receivers
- Multifunction Clips

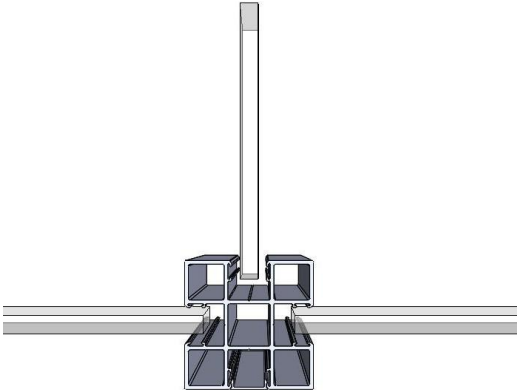


- Slimline 45mm/75mm

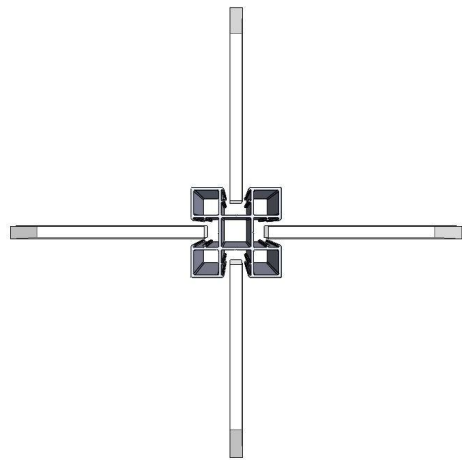
# Scenarios



Plan - Single Glazed 2 Way Junction



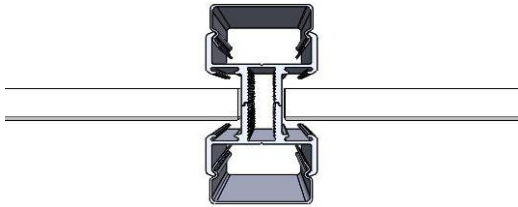
Plan - Single Glazed 3 Way Junction



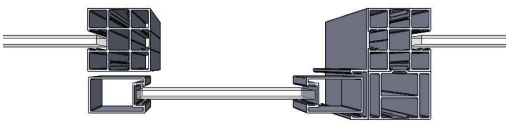
Plan - Single Glazed 4 Way Junction



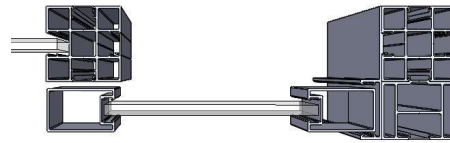
Plan - Single Glazed Butt Joint



Plan - Single Glazed With Joiner



Plan - Sliding Door at Intermediate



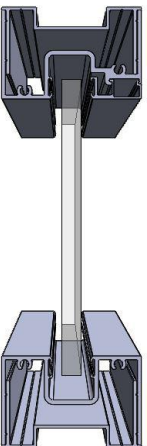
Plan - Sliding Door at Wall Start



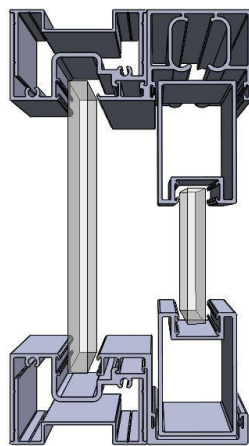
Plan - Swing Door at Intermediate



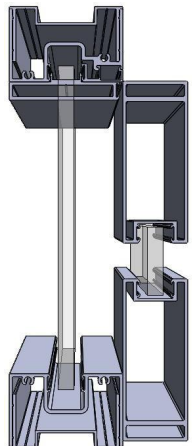
Plan - Swing Door at Wall Start



Section - Single Centre Glazing



Section - Sliding Door



Section - Swing Door

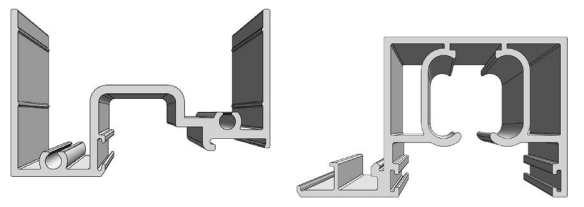
# Door Assemblies (Slider)



Clip on Wheel to Top Door Track



Top Hung Door

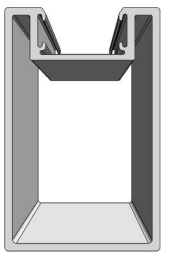


Double Soft Closer Mechanism

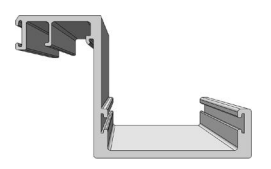
Pre-Fabricated Bulkhead



Low Profile (60mm)



Sliding Door Reciever Track

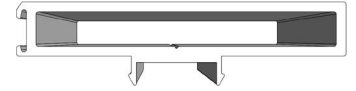


# Door Assemblies (Swing)

SOSS Hinges



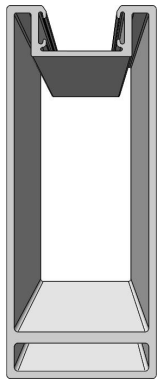
Flush Closer



Pre-Fabricated Bulkhead



High Profile For Maximum Rigidity (100mm)





# Technical Information

Framework: 45mm/70mm (Height/Width)

Glass Joint Options: 'H' Metal Channel, Taped Seam, Wet Glazed Silicone

Slip Track Deflection Head: 20mm Tolerance

Standard Height: 2438mm - Available Bespoke

Glass Standard Width: 1000mm - Available Custom/Bespoke

Glass Standard Specification: 10mm Low Iron Laminate (4+6) PVB-DBL Tempered

Glass Available Specification: 6mm-15mm, STD of Low Iron, Laminate and/or Tempered

Colors: Black, Light/Dark Grey & White (Bespoke Available)

Finish: Anodized or Powder Coated

Acoustic Rating: Pending Testing Lab (Target 38)

## Doors

Sliders: Top Hung

Glass: 10mm Laminate Low Iron

Feature: Gasketed/Self Supported

Hinges: SOSS (Heavy Duty)